

P R I S M W H E E L D R E S S E R S

J&M

DIAMOND TOOL, INC.



Prism Wheel Dressers

J & M Diamond Prism Wheel Dressers

are manufactured using high quality single crystal synthetic diamonds which are precision laser cut into long, thin prisms. They are ideal for all kinds of grinding wheels, including CBN and ceramic.

Predictable Consistent Performance

Diamonds are low in impurities, have excellent fracture resistance and are of consistent size.

Versatile

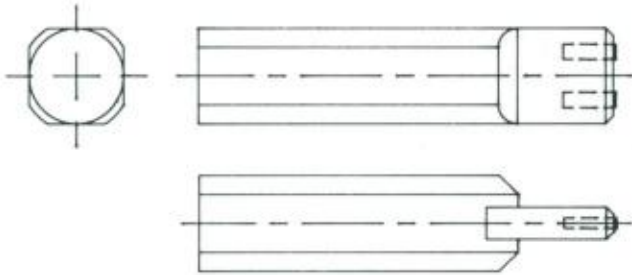
Available in variable sizes of prisms, various shank sizes and 1-7 stone configuration.

Economical

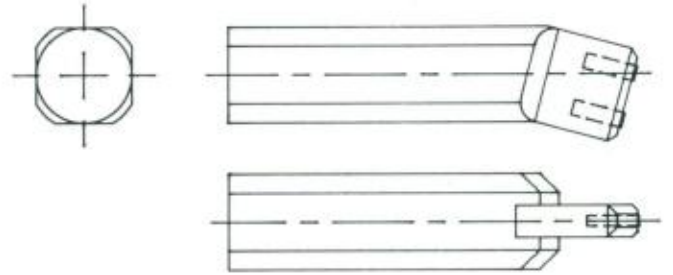
All J & M Prism dressers are set in our vacuum furnace which fuses the diamond to the steel. This assures that all the diamonds are consumed completely and will not loosen or pull out.

Style Selection

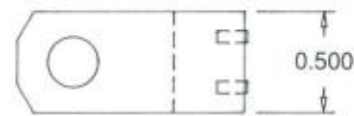
Standard



15° Offset



Modular



Diamond Location

S (Side Set)

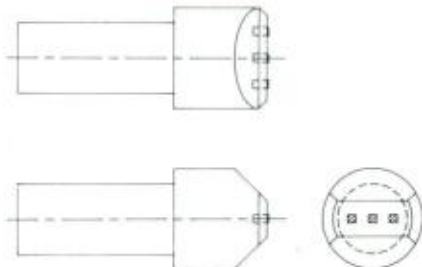


C (Center Set)

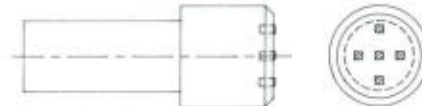


Cluster

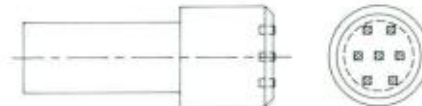
3 STONE



5 STONE



7 STONE

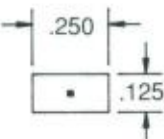
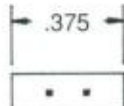

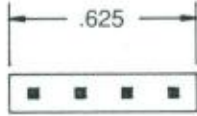
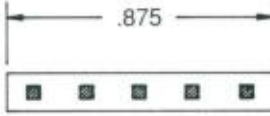


Shank Size Selection

SHANK STYLE	STANDARD SHANK SIZES AVAILABLE
Standard	3/8 x 1-1/4 or 7/16 x 1-1/4
Offset (15°)	3/8 x 1-1/4 or 7/16 x 1-1/4
Modular	7/8 x 1-1/8 or 1/2 x 1-1/8
Cluster	7/16 x 1-1/2 OAL with head

Special shank sizes available upon request.

Blade Size Selection



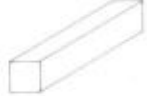

JM-1	JM-2	JM-3
		
JM-4		JM-5
		

Special blade sizes available on request.

Recommended Number of Diamonds

WHEEL WIDTH	WHEEL DIAMETER										
	4"	6"	8"	10"	12"	14"	16"	18"	20"	24"	
1/2"	1		2		3		3	4	4	5	
1"	1	2		3		3		4		5	
1-1/2"			3		3		4		5		
2"	2			3		3		4	5	5	
2-1/2"		3		3		3					
3"			3		4		4		5		
4"										5	

Diamond Size Selection

*16	*24	*32	*44
			
.016 x .016 x .125			.024 x .024 x .125
.032 x .032 x .125			.044 x .044 x .125
GRIT SIZE OF WHEEL		RECOMMENDED DIAMOND SIZE	
150 and finer		*16	
120		16 or 24	
80		24 or 32	
60		24 or 32	
36		32 or 44	

Ordering Information

STYLE	SPECIFY
Standard	<ul style="list-style-type: none"> Shank Size Blade Size Number of Diamonds Size of Diamonds
Offset	<ul style="list-style-type: none"> Shank Size Blade Size Number of Diamonds Size of Diamonds
Modular	<ul style="list-style-type: none"> Shank Size Number of Diamonds Size of Diamonds Location - Center Set or Side Set
Cluster	<ul style="list-style-type: none"> Number of Diamonds 3, 5 or 7 Size of Diamonds

Ask about custom styles and shank sizes for any straight or contoured dressing application.

All dimensions are in inches.



*All J&M tools – CBN, polycrystalline, and natural diamond
– are made in East Providence, Rhode Island, USA.*

About J & M

J&M Diamond Tool, Inc. specializes in the design and manufacture of polycrystalline and natural diamond tooling, diamond dressing and cleaving tools, diamond scribes and engravers, and miniature carbide tooling.

Besides our regular lines, we constantly design and manufacture custom parts for many applications. Our Coneset affiliate, located on-site, specializes in vacuum bonded diamond/steel adherence, and the manufacture of small diamond styli.

Please send for our complete catalog and price list.

J&M

DIAMOND TOOL, INC.

43 Roger Williams Avenue, P.O. Box 16099
East Providence, Rhode Island 02916 USA
401-431-2220 800-777-6813 (401-431-2222 , FAX)